

- LSF07 is a high speed model for precision grinding and polishing. LSF07 is delivered with a 3 mm collet and can be equipped with a 1/8" collet as optional. (Without speed governor)
- LSF12/LSV12 – Small and comfortable die grinder with up to 360 W for maximum control in cramped spaces. All models are delivered with speed governor and a well balanced 6 mm Erickson collet.
- LSF19/LSV19 – All models in the 19 series are equipped with a powerful 0.5 kW air motor and a speed governor. The angled models (LSV) have a patented solution that overcomes temperature and leakage problems commonly associated with angle head tools. The result is a leak free and self-cooled angle head. All models are lubrication free except for the high speed model LSF19 S460.
- LSF29/LSV29 – Powerful 1 kW air motor, with speed governor and scatter damping. Impressive power-to-weight ratio.
- LSF39 – One of the most powerful one hand die grinders on the market, up to 1.8 kW. The die grinders in the 39 series are lubrication free with scatter damping for maximum operator comfort and safety.



Model	Max free speed r/min	Rec. max dia of		Max output kW hp	Weight kg lb	Length mm	Air consumption at				Rec. hose size mm in	Air inlet thread BSP	Collet size	Ordering No.	
		Tungsten carbide burrs mm	Mounted points mm				max output l/s	free speed l/s	l/s	cfm					
Straight die grinders															
LSF12 S400-1 ^a	40000	9	16	0.36 0.48	0.4 0.8	170	9.8	20.8	7.0	14.8	8 5/16	1/4	6 mm	8423 1124 04	
LSF12 S310-1 ^a	31000	12	20	0.32 0.43	0.4 0.8	170	9.2	19.5	4.2	8.9	8 5/16	1/4	6 mm	8423 1124 03	
LSF12 S250-1 ^a	25000	12	20	0.29 0.39	0.4 0.8	170	8.5	18.0	3.4	7.2	8 5/16	1/4	6 mm	8423 1124 02	
LSF12 S200-1 ^a	20000	12	20	0.24 0.32	0.4 0.8	170	8.1	17.2	2.6	5.5	8 5/16	1/4	6 mm	8423 1124 01	
LSF19 S460E-1/R	46000	9	16	0.51 0.68	0.7 1.5	293	11.4	24.0	15.0	31.5	10 3/8	1/4	6 mm	8423 1224 90	
LSF19 S460-1	46000	9	16	0.51 0.68	0.5 1.1	193	11.4	24.0	15.0	31.5	10 3/8	1/4	6 mm	8423 1224 82	
LSF19 S460E-1	46000	9	16	0.51 0.68	0.7 1.5	293	11.4	24.0	15.0	31.5	10 3/8	1/4	6 mm	8423 1224 87	
LSF19 S300-1	30000	12	20	0.50 0.67	0.5 1.1	193	11.3	23.7	6.6	13.8	10 3/8	1/4	6 mm	8423 1224 81	
LSF19 S300-2	30000	12	20	0.50 0.67	0.5 1.1	193	11.3	23.7	6.6	13.8	10 3/8	1/4	1/4 in	8423 1224 84	
LSF19 S300-1/R	30000	12	20	0.50 0.67	0.5 1.1	193	11.3	23.7	6.6	13.8	10 3/8	1/4	6 mm	8423 1224 89	
LSF19 S300E-1	30000	12	20	0.50 0.67	0.7 1.5	293	11.3	23.7	6.6	13.8	10 3/8	1/4	6 mm	8423 1224 86	
LSF19 S300E-1/R	30000	12	20	0.50 0.67	0.7 1.5	293	11.3	23.7	6.6	13.8	10 3/8	1/4	6 mm	8423 1224 88	
LSF19 S200-1	20000	12	20	0.50 0.67	0.5 1.1	193	9.6	20.1	3.5	7.4	10 3/8	1/4	6 mm	8423 1224 80	
LSF19 S200-2	20000	12	20	0.50 0.67	0.5 1.1	193	9.6	20.1	3.5	7.4	10 3/8	1/4	1/4 in	8423 1224 83	
LSF19 S200E-1	20000	12	20	0.50 0.67	0.7 1.5	293	9.6	20.1	3.5	7.4	10 3/8	1/4	6 mm	8423 1224 85	
LSF29 S120	12000	16	40	0.67 0.9	0.8 1.7	213	17.0	36.0	3.5	7.4	13 1/2	3/8	6 mm	8423 0127 00	
LSF29 S120-HD R	12000	16	40	0.67 0.9	1.2 2.6	213	17.0	36.0	3.5	7.4	13 1/2	3/8	6 mm	8423 0127 23	
LSF29 S120E-HD R	12000	16	40	0.67 0.9	1.6 3.5	332	17.0	36.0	3.5	7.4	13 1/2	3/8	6 mm	8423 0127 22	
LSF29 S150	15000	16	40	0.79 1.1	0.8 1.7	213	18.0	38.1	4.4	9.3	13 1/2	3/8	6 mm	8423 0127 02	
LSF29 S150E	15000	16	40	0.79 1.1	1.4 3.1	332	18.0	38.1	4.4	9.3	13 1/2	3/8	6 mm	8423 0127 04	
LSF29 S180	18000	16	40	0.88 1.2	0.8 1.7	213	20.0	42.4	6.2	13.1	13 1/2	3/8	6 mm	8423 0127 05	
LSF29 S180-HD R	18000	16	40	0.88 1.2	1.2 2.6	213	20.0	42.4	6.2	13.1	13 1/2	3/8	6 mm	8423 0127 25	
LSF29 S180E	18000	16	40	0.88 1.2	1.4 3.1	332	20.0	42.4	6.2	13.1	13 1/2	3/8	6 mm	8423 0127 08	
LSF29 S180E-HD R	18000	16	40	0.88 1.2	1.6 3.5	332	20.0	42.4	6.2	13.1	13 1/2	3/8	6 mm	8423 0127 24	
LSF29 S250 ^a	25000	12	32	1.03 1.4	0.8 1.7	213	22.0	46.6	8.6	18.2	13 1/2	3/8	6 mm	8423 0127 11	
LSF29 S250-HD R ^a	25000	12	32	1.03 1.4	1.2 2.6	213	22.0	46.6	8.6	18.2	13 1/2	3/8	6 mm	8423 0127 27	
LSF29 S250E ^a	25000	12	32	1.03 1.4	1.4 3.1	332	22.0	46.6	8.6	18.2	13 1/2	3/8	6 mm	8423 0127 14	
LSF29 S250E-HD R ^a	25000	12	32	1.03 1.4	1.6 3.5	332	22.0	46.6	8.6	18.2	13 1/2	3/8	6 mm	8423 0127 26	
LSF39 S120E	12000	16	40	1.5 2.0	1.6 3.6	367	24.2	51.3	9.0	19.1	13 1/2	3/8	6 mm	8423 1233 00	
LSF39 S150E	15000	16	40	1.7 2.3	1.6 3.6	367	27.6	58.5	12.1	25.6	13 1/2	3/8	6 mm	8423 1233 01	
LSF39 S180E	18000	16	40	1.8 2.5	1.6 3.6	367	30.8	65.3	15.2	32.2	13 1/2	3/8	6 mm	8423 1233 02	
LSF39 S250E ^a	25000	16	40	1.8 2.5	1.6 3.6	367	32.9	69.7	33.2	70.3	13 1/2	3/8	6 mm	8423 1233 03	

^a Not lubrication-free.

E = Extended version R = Model is rigid, without scatter damping

Continued...

Model	Max free speed r/min	Rec. max dia of		Max output		Weight		Length	Air consumption at				Rec. hose size		Air inlet	Collet size	Ordering No.
		Tungsten carbide burs	Mount- ed points						kW	hp	kg	lb	mm	max output			
		mm	mm						l/s	cfm	l/s	cfm			BSP		
Angle die grinders																	
LSV12 S200-1 ^a	20000	12	20	0.29	0.39	0.5	1.2	166	9.5	20.1	6.4	13.6	8	5/16	1/4	6 mm	8423 1124 06
LSV12 S120-1 ^a	12000	12	20	0.24	0.33	0.5	1.2	166	8.3	17.6	3.0	6.4	8	5/16	1/4	6 mm	8423 1124 05
LSV19 S200-1	20000	12	20	0.46	0.62	0.6	1.3	185	11.3	23.9	7.5	15.9	10	3/8	1/4	6 mm	8423 0111 41
LSV19 S120-1	12000	12	20	0.46	0.62	0.6	1.3	185	11.3	23.9	7.5	15.9	10	3/8	1/4	6 mm	8423 0111 43
LSV19 S080-1	8000	12	20	0.37	0.50	0.6	1.3	185	11.3	23.9	6.5	13.8	10	3/8	1/4	6 mm	8423 0111 46
LSV28 S150	15000	16	40	0.68	0.91	1.2	2.5	250	17.0	36.0	8.3	17.6	10	3/8	3/8	6 mm	8423 0125 54
Grinders for polishing																	
LSF29 S030 R	3000	—	—	0.83	1.1	1.2	2.6	257	20.0	42.4	6.2	13.1	13	1/2	3/8	6	8423 0127 18
LSF29 S030E	3000	—	—	0.83	1.1	1.8	4.0	381	20.0	42.4	6.2	13.1	13	1/2	3/8	6	8423 0127 19
LSF29 S070 R ^a	7000	—	—	0.98	1.3	1.2	2.6	256	22.0	46.6	8.6	18.2	13	1/2	3/8	6	8423 0127 20
LSF29 S070E ^a	7000	—	—	0.98	1.3	1.8	4.0	381	22.0	46.6	8.6	18.2	13	1/2	3/8	6	8423 0127 21
High speed pen model																	
LSF07 S850	88000	4	6	0.10	0.10	0.4	0.9	173	2.2	4.9	2.3	4.6	4.5	3/16	—	3 mm	8423 1222 03

^a Not lubrication-free. E = Extended version R = Model is rigid, without scatter damping

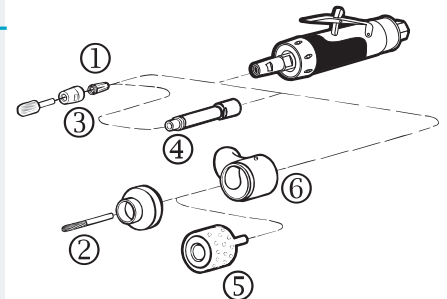
Accessories Included

LSF07	LSF/LSV12	LSF/LSV19/28/29	LSF39
Air hose, ErgoNIP 08, Collet 3 mm (See ill 1.)	Spanner, Collet 6 mm (See ill. 1), Air hose, Air hose nipple and clamp, Exhaust hose	Spanner, Collet 6 mm (See ill. 1), Air hose, Air hose nipple and clamp, Exhaust hose	Air hose nipple, Collet 6 mm (See ill 1.)

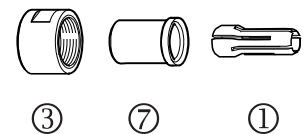
Optional Accessories

	LSF07	LSF/LSV12	LSF/LSV19	LSF/LSV29	LSF39	See ill.
Optional collets						
Collet 1/8"	4150 1822 00	4150 2226 46	-	-	-	1
Collet 3 mm	4150 1800 00	-	4150 0081 00	4150 0081 00	-	1
Collet 6 mm	-	4150 2226 03	4150 0075 00	4150 0075 00	4150 1453 00	1
Collet 8 mm	-	-	4150 0074 00	4150 0074 00	4150 0706 00	1
Collet 1/4"	-	-	4150 0076 00	4150 0076 00	4150 1754 00	1
Collet 10 mm	-	-	-	-	4150 0681 00	1
Collar	-	4150 2226 02	-	-	-	7
Collet nut	-	4150 2226 04	4150 0760 00	4150 0760 00	4150 0849 00	3
Collet nut and holder	-	-	-	4110 0844 90	-	-
Extension 75 mm/3"	-	-	4150 0674 00 ^a	4150 0674 00 ^a	-	4
For machining of plastic and fibre glass						
Diamond burr Ø 6 mm	-	3780 5013 70	3780 5013 70	-	-	2
Diamond drum Ø 27 mm	-	-	3780 5033 00	-	-	5
Spot suction kit for burr (burr not incl.)	-	3780 3015 23	3780 3015 22	-	-	6
Spot suction kit for drum (drum not incl.)	-	-	3780 4011 61 ^b	-	-	6
Cone wheel adapter UNF 3/8	-	-	-	4150 2326 80 ^c	-	-
Cone wheel adapter UNC/W 5/8	-	-	-	4150 2292 85 ^c	-	-

^a Only for rigid (-R) models ^b For use with 6 mm collet ^c Only for extended (-E) models



LSF07, LSF/LSV12



Productivity Kits

Model	Air inlet BSP	Max air flow	Hose, 5 m	Coupling	Lubrication	Ordering No.
MIDI Optimizer F/RD EQ10-R13-W, incl. whiphose	3/8	23 l/s	Rubair 13 mm	ErgoQIC 10	Yes	8202 0850 14
MIDI Optimizer F/RD EQ10-R13-W, incl. whiphose	—	23 l/s	Rubair 13 mm	ErgoQIC 10	Yes	8202 0850 15
MIDI Optimizer F/RD EQ10-T13	3/8	35 l/s	Turbo 13 mm	ErgoQIC 10	Yes	8202 0850 17
MIDI Optimizer F/R EQ10-T13	1/2	35 l/s	Turbo 13 mm	ErgoQIC 10	No	8202 0850 04
MIDI Optimizer F/RD EQ10-T13	1/2	35 l/s	Turbo 13 mm	ErgoQIC 10	Yes	8202 0850 13



Service Kits

07 series 4081 0243 90 12 series 4081 0472 90 19 series 4081 0486 90 29 series 4081 0581 00 39 series 4081 0581 03
210 Grinders